



RANCH HUNTING in Namibia



Our main hunting area is 2 hours drive east of Windhoek, Namibia's bustling capital city. The areas comprise of bush-covered plains with the Epukiro Omuramba to the north and the more open semi desert to the south at the Black Nossob River. The Natalia cattle ranch comprises of 5 000 ha / 11 850 acres and in close vicinity, VHSaf have various other concessions on private owned land, totalling 21 000 ha / 51 930 acres. All farms have five metal strand fences, which only prevent cattle from moving freely. The majority of the area has no high game proof fences to prevent game from roaming freely.

The vegetation is on average medium density: Grasslands covered with short brush, huge Acacia Erioloba trees and patches of dense Acacia Mellifera, where kudu and oryx like

to lie up during the hottest period of the day. Here large populations of southern greater kudu, grey bush duiker, steenbok, warthog, caracal, cheetah, with big herds of oryx / gemsbok and red hartebeest roam freely. Small herds of springbok occur and blue wildebeest move seasonally through the concession areas. Further to the east an isolated population of burchell zebra occurs on one of our areas. On game proof fenced ranches a wider variety of game species is available.

Natalia's accommodation is real Namibian farm style, cosy with a warm atmosphere. The guest facility is situated close to the main farmhouse, each room has its own shower and toilet facilities in one big complex. The garden is filled with the most beautiful cactus, surrounded by large tall trees. Farm Natalia is personally managed by Van Heerden Safaris and are our permanent base camp.



...OUTDOOR OPTIONS

Van Heerden Safaris cc can offer an equally exciting Namibia safari to any non-hunter who may be accompanying the hunting safari. They can join the hunting party in the bush, do a photographic safari with their own guide and vehicle or spend some time enjoying the bird and animal antics at a waterhole. Excursions can be arranged to National Parks and coastal towns as an extra activity, with unique photographic opportunities. Please contact us to get a tailor made photo safari worked out! Allow us, **Van Heerden Safaris cc**, to present to you our Ranch/Farm Hunting Areas.



... THE ULTIMATE NAMIBIAN HUNTING SAFARI

PRICE LIST Ranch Hunts - 2012

DAILY RATES:

- All prices in US Dollar -

Minimum 6 Hunting Days	1 Hunter with 1 Professional Hunter	395.00 per day	= 2,370.00
Minimum 7 Hunting Days	2 Hunters with 1 Professional Hunter	275.00 per day	= 1,925.00
Minimum 7 Hunting Days	4 Hunters with 2 Professional Hunters	245.00 per day	= 1,715.00
Arrival Day / Departure Day		135.00 per day	
Non-Hunting Companion / Day of rest		135.00 per day	

COMBINATION PACKAGES WITH HUNTS IN ONDJOU & KING NEHALE CONSERVACNIES ARE POSSIBLE: I.E.

**Plains Game & Leopard Hunt (Farm & Ondjou),
Plains Game & Spotted Hyena Hunt (Farm & King Nehale),
Plains Game & Own Use Elephant Hunt (Farm & Ondjou; only in June!),
Plains Game & Springbok Cull Hunt (Farm & King Nehale; only in August!)**

INCLUDED IN THE DAILY RATES:

- ⊕ Transfer from Windhoek Int. Airport to the Ranch and back to Windhoek Int. Airport (1.5 - 2 hours one way)
- ⊕ Fullboard accommodation
- ⊕ Laundry Service
- ⊕ Qualified Professional Hunter(s) - tracker - skinner
- ⊕ Well maintained 4x4 hunting vehicles
- ⊕ Field prep of trophies
- ⊕ Hunting license
- ⊕ 15 % VAT on daily rates only

NOT INCLUDED IN THE DAILY RATES:

- ⊕ Flights to & from Windhoek
(Air Namibia offers several flights weekly from Windhoek. Direct flights to Windhoek: with Air Namibia from Frankfurt, Germany; with Air Berlin from Munich, Germany and with South African Airways from Johannesburg & Cape Town, South Africa)
- ⊕ Trophy Fees (see price list underneath)
- ⊕ Dipping & Packing of trophies
- ⊕ Accommodation in Windhoek before & after the safaris
- ⊕ Sightseeing – Etosha National Park, Swakopmund, Damaraland, Sossusvlei, etc.
- ⊕ PH & camp staff gratuities
- ⊕ Special requested alcoholic beverages
- ⊕ Phone calls from VhSaf's satellite or cellphone
- ⊕ Internet Usage



... THE ULTIMATE NAMIBIAN HUNTING SAFARI

T R O P H Y F E E S & C O N D I T I O N S

TROPHY FEES:

- All prices in US Dollar -

Greater Kudu	1,450.00	Blue Wildebeest	950.00
Oryx	675.00	Black Wildebeest	1,500.00
Red Hartebeest	650.00	Burchell's Zebra	1,200.00
Springbok	390.00	Common Impala	600.00
Warthog	390.00	Blesbok	550.00
Grey Duiker	390.00	Eland	2,450.00
Steenbok	390.00	Giraffe	2,750.00
Hartmann's Zebra	1,200.00		
Black-Backed Jackal	100.00*	Chacma Baboon	100.00*
<i>* if exported, otherwise free of charge</i>			

CONDITIONS:

Safaris are confirmed on receipt of 50% of the total daily rate. The outstanding balance is due 30 days prior to the commencement of the safari. All trophy fees are payable in cash or travellers cheques at the conclusion of the safari.

Unused fees paid in advance will be refunded.

According to Namibian Hunting Legislation, animals wounded after an extensive search not found, will be regarded as hunted and charged in full.

If a written notice of cancellation of the safari is received at least 180 days prior to the commencement of the safari, you shall receive 50 % refund of the deposit.

It is imperative to consult with your travel agent for proper travel insurance!

Any safari activity, but especially a big game safari, is potentially hazardous and it is essential that all lawful directions of the safari operator be followed. Van Heerden Safaris and its directors will not accept responsibility for any illness, accident or loss whatsoever incurred in the course of the safari or for any expense from such illness, accident or loss.

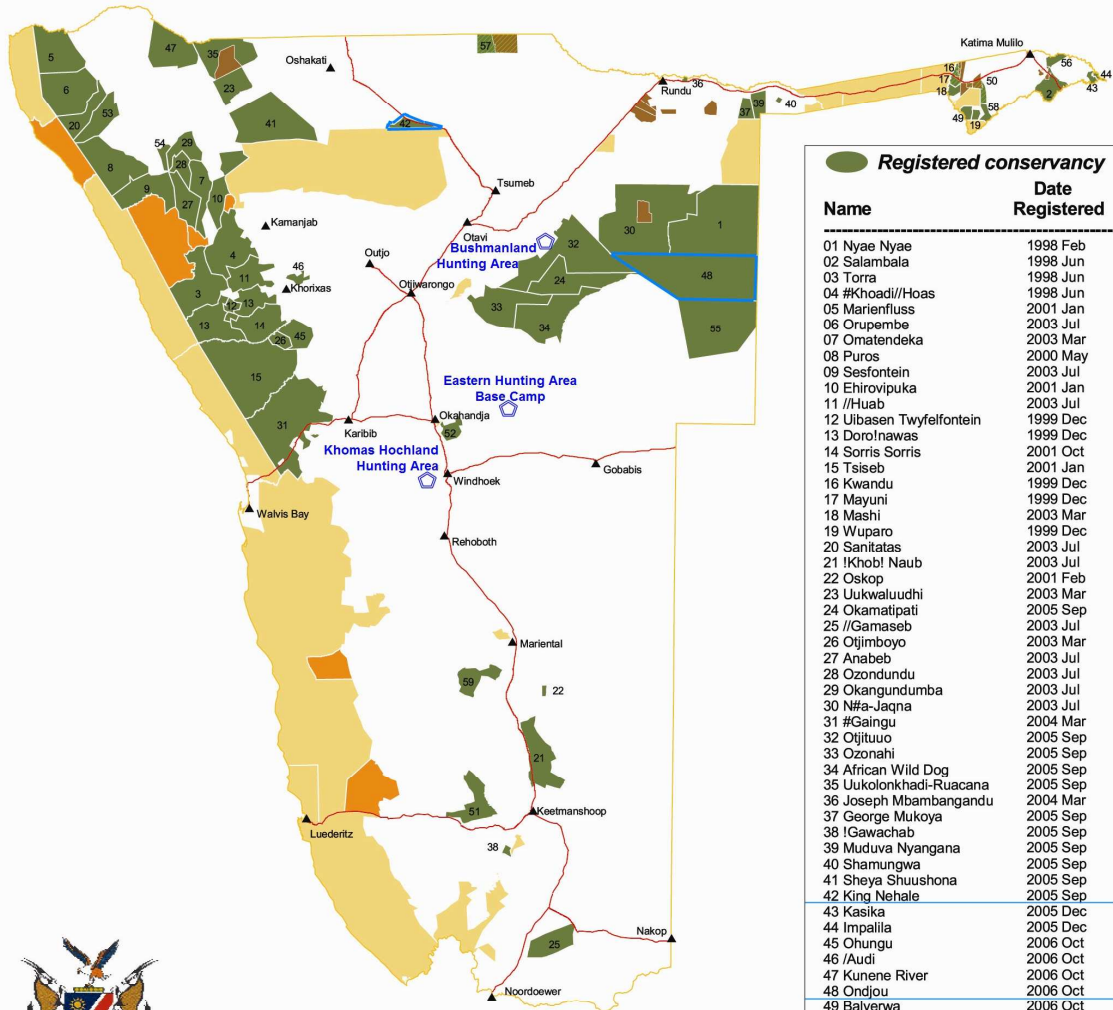


*** ALL PRICES IN US DOLLAR ***
 *** PRICES ARE SUBJECT TO CHANGE ***

... THE ULTIMATE NAMIBIAN HUNTING SAFARI

MAP & CONTACT DETAILS

Registered Communal Conservancies



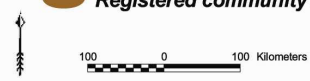
Registered conservancy

Name	Date Registered
01 Nyae Nyae	1998 Feb
02 Salambala	1998 Jun
03 Torra	1998 Jun
04 #Khoadi//Hoas	1998 Jun
05 Marienfluss	2001 Jan
06 Orupembe	2003 Jul
07 Omatendeka	2003 Mar
08 Puros	2000 May
09 Sesfontein	2003 Jul
10 Ehirovipuka	2001 Jan
11 //Huab	2003 Jul
12 Uibasen Twyfelfontein	1999 Dec
13 Dorofnawas	1999 Dec
14 Sorris Sorris	2001 Oct
15 Tsiseb	2001 Jan
16 Kwandu	1999 Dec
17 Mayuni	1999 Dec
18 Mashi	2003 Mar
19 Wuparo	1999 Dec
20 Sanitatas	2003 Jul
21 !Khub! Naub	2003 Jul
22 Oskop	2001 Feb
23 Uukwaluudhi	2003 Mar
24 Okamatipati	2005 Sep
25 //Gamaseb	2003 Jul
26 Otjimboyo	2003 Mar
27 Anabeb	2003 Jul
28 Ozondunda	2003 Jul
29 Okangundumba	2003 Jul
30 N#a-Jaqna	2003 Jul
31 #Gaiingu	2004 Mar
32 Otjituuo	2005 Sep
33 Ozonahi	2005 Sep
34 African Wild Dog	2005 Sep
35 Jukolonkhadi-Ruacana	2005 Sep
36 Joseph Mbambangandu	2004 Mar
37 George Mukoya	2005 Sep
38 //Gawachab	2005 Sep
39 MuDuva Nyangana	2005 Sep
40 Shamungwa	2005 Sep
41 Sheya Shuushona	2005 Sep
42 King Nehale	2005 Sep
43 Kasika	2005 Dec
44 Impalila	2005 Dec
45 Ohungu	2006 Oct
46 Audi	2006 Oct
47 Kunene River	2006 Oct
48 Ondjou	2006 Oct
49 Balyerwa	2006 Oct
50 Sobbe	2006 Oct
51 !Han/Awab	2008 May
52 Ovitoto	2008 May
53 Okondjombo	2008 Aug
54 Otjambangu	2009 Mar
55 Eiseb	2009 Mar
56 Sikunga	2009 Jul
57 Okongo	2009 Aug
58 Dotzi	2009 Oct
59 Huibes	2009 Oct



Ministry of Environment & Tourism
Updated Oct. 2009

State Protected Area
 Concession
 Registered community forest



WWW.VANHEERDENSAFARIS.COM
vhsaf@mweb.com.na

Tel.: +264 81 127 41 55 / +264 81 228 21 89

... THE ULTIMATE NAMIBIAN HUNTING SAFARI