



CAPRIVI – Dzoti Communal Concession



In a vast arid country like Namibia, the Eastern Caprivi is an oasis with rivers like the mighty Zambezi, Chobe, Kwando and Linyanti. Mamili National Park is the largest wetland area in Namibia that enjoys conservation status and so creating a protected zone for the fauna and flora living in this lush, complex marshland.

Dzoti hunting concession is one of the youngest registered conservancies but definitely one of the most promising big game hunting areas in Namibia. The area comprises of 250 km² and borders directly with three major National Parks.

With Mudumo National Park in the north-west as the border, Dzoti shares the same dense Mopani

vegetation that offers shelter to animal species like Sable, Roan, Kudu, Burchell's Zebra and Impala. The south-western limit is Mamili National Park with its complex channel of reed beds, lakes and islands that make up the Linyanti swamps. The south-eastern border is the Linyanti River of which the opposite shoreline belongs to the world-renowned Chobe National Park of Botswana. Here spectacular herds of Elephant, Buffalo and Red Lechwe are some of the highlights. Plenty of Hippopotamus, big Crocodiles, Reedbuck and the more elusive Sitatunga are at home here.

With 430 bird species recorded in the region, it is more bird species than recorded anywhere else in Namibia. A paradise to do some birding after the hunt along the green water channels or while fishing, trying to land some Bream for supper!

Situated superbly between three national parks, Dzoti hunting concession is one of the only areas in Namibia where you can find and hunt four of the Big Five – Elephant, Lion, Buffalo and Leopard!



Clients hunting on communal conservancies in Namibia can be assured that a significant portion of their funds are being ploughed back into wildlife conservation efforts. These efforts are not only

promoting the long-term welfare of Namibia's wildlife, but also creating strong bonds between rural communities and the value they place on their wildlife resources.

There is hope in every sunrise and fulfillment in every sunset. Allow us to present to you concession hunting. For many, a safari to Africa is the trip of a lifetime and for others, these become a way of life. Let your way of life start with **Ondjou & Van Heerden Safaris!** Namibia, not only the land of contrasts, but also the land we call home.

... THE ULTIMATE NAMIBIAN HUNTING SAFARI

PRICE LIST Big Game CAPRIVI – 2018

DAILY RATES:

- All prices in US Dollar -

Minimum 8 Hunting Days	Hippo / Crocodile / Plains Game – 1 Hunter with 1 Professional Hunter	1,200.00 per day	= 9,600.00
Minimum 11 Hunting Days	Hippo / Crocodile / Plains Game – 2 Hunters with 1 Professional Hunter	1,050.00 per day	= 11,550.00
Minimum 10 Hunting Days	Roan or Sable / Plains Game – 1 Hunter with 1 Professional Hunter	1,050.00 per day	= 10,500.00
Minimum 8 Hunting Days	Buffalo / Plains Game – 1 Hunter with 1 Professional Hunter	1,650.00 per day	= 13,200.00
Minimum 10 Hunting Days	Buffalo / Plains Game – 2 Hunters with 1 Professional Hunter	1,400.00 per day	= 14,000.00
Minimum 8 Hunting Days	Elephant (Non-Trophy) No export allowed!!! 1 Hunter with 1 Professional Hunter	1,450.00 per day	= 11,600.00
Minimum 10 Hunting Days	Elephant (Trophy) / Plains Game 1 Hunter with 1 Professional Hunter	2,900.00 per day	= 29,000.00
Minimum 13 Hunting Days	Elephant (Trophy) / Buffalo / Plains Game – 1 Hunter with 1 Professional Hunter	3,150.00 per day	= 40,950.00
Minimum 20 Hunting Days	Elephant (Trophy) / Hippo / Buffalo / Croc / Roan and/or Sable / Plains Game – 1 Hunter with 1 Professional Hunter	3,150.00 per day	= 63,000.00
Non-Hunting Companion / Day of rest		350.00 per day	

INCLUDED IN THE DAILY RATES:

- ⊕ Transfer from Mpacha Airport to camp and back to Mpacha Airport (1.5 hours one way)
- ⊕ Fullboard accommodation
- ⊕ Qualified Professional Hunter(s) - tracker - skinner
- ⊕ Well maintained 4x4 hunting vehicles
- ⊕ Field prep of trophies
- ⊕ Hunting license
- ⊕ 15 % VAT on daily rates only

NOT INCLUDED IN THE DAILY RATES:

- ⊕ Flights from Windhoek and from there to Mpacha (Air Namibia offers one flight daily to/from Mpacha on Mondays, Wednesdays, Fridays & Sundays.
Direct flights to Windhoek: with Air Namibia, Condor, KLM, Qatar Airways)
- ⊕ Trophy Fees (see price list underneath)
- ⊕ Dipping & Packing of trophies
- ⊕ Accommodation in Windhoek before & after the safaris
- ⊕ Sightseeing – Chobe N. P., Victoria Falls, Livingstone, etc.
- ⊕ PH & camp staff gratuities
- ⊕ Special requested alcoholic beverages
- ⊕ Phone calls from camp's satellite phone



... THE ULTIMATE NAMIBIAN HUNTING SAFARI

TROPHY FEES 2018 & CONDITIONS

TROPHY FEES:

- All prices in US Dollar -

Elephant (Trophy)	35,000.00	Greater Kudu	1,750.00
Elephant (Non-Trophy) *	5,750.00	Burchell's Zebra	1,750.00
Buffalo (Trophy)	8,500.00	Reedbuck **	1,500.00
Buffalo (Non-Trophy) *	<i>Price on request</i>	Bushbuck **	1,500.00
Hippo (Trophy)	4,500.00	Blue Wildebeest	950.00
Hippo (Non-Trophy) *	<i>Price on request</i>	Common Impala	750.00
Crocodile	3,500.00	Grey Duiker **	500.00
Sable **	8,000.00	Warthog	500.00
Roan **	8,000.00	Chacma Baboon	150.00
Red Lechwe **	5,000.00	Black-Backed Jackal	150.00
Eland **	2,750.00	* NO EXPORT ALLOWED!!!	
Waterbuck **	2,750.00	** TROPHY QUOTA IS VERY LIMITED	

Trophy fees, income of non-trophy animals as well as all the meat are for the benefit of the local population.

Trophy quota is limited!

CONDITIONS:

Safaris are confirmed on receipt of 50% of the total daily rate. The outstanding balance is due 30 days prior to the commencement of the safari. All trophy fees are payable in cash or travellers checks at the conclusion of the safari.

Unused fees paid in advance will be refunded.

According to Namibian Hunting Legislation, animals wounded after an extensive search not found, will be regarded as hunted and charged in full.

Our cancellation policy is described in the hunting contract which you will receive and asked to sign when making a booking.

It is imperative to consult with your travel agent for proper travel insurance!

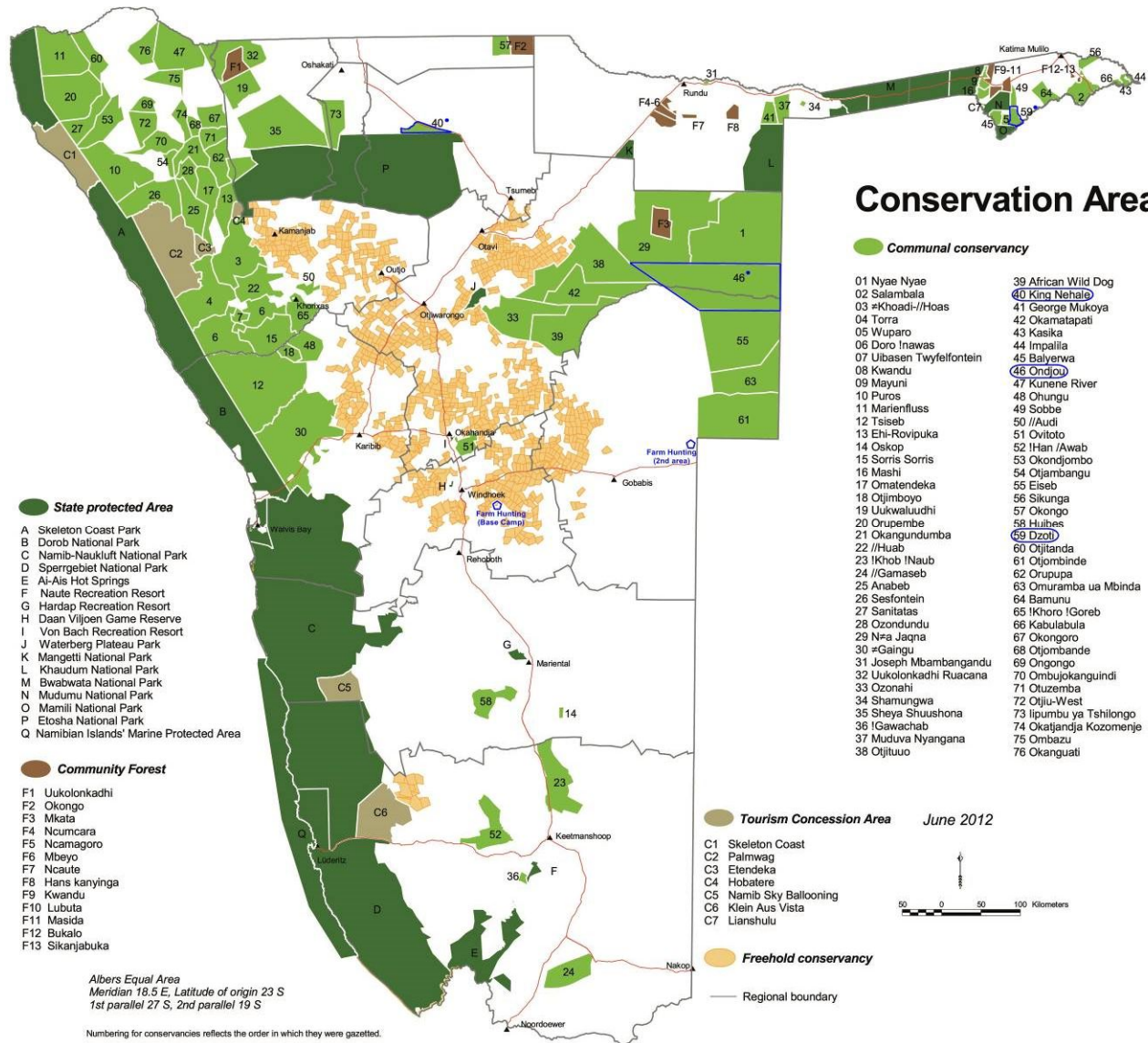
Any safari activity, but especially a big game safari, is potentially hazardous and it is essential that all lawful directions of the safari operator be followed. Ondjou & Van Heerden Safaris and its directors will not accept responsibility for any illness, accident or loss whatsoever incurred in the course of the safari or for any expense from such illness, accident or loss.

*** PRICES ARE SUBJECT TO CHANGE ***



... THE ULTIMATE NAMIBIAN HUNTING SAFARI

MAP & CONTACT DETAILS



WWW.VANHEERDENSAFARIS.COM

Falko Schwarz - Hentie & Denise van Heerden

vhsaf@africaonline.com.na / halseton@iway.na

Cell: +264 81 127 41 55 / +264 81 206 05 20

Skype: vanheerdensafaris

... THE ULTIMATE NAMIBIAN HUNTING SAFARI